

State of Wyoming Corner Record

(in compliance with the CORNER PERPETUATION AND FILING ACT, Wyoming Statutes, 1997, Section 33-29-140, et. seq. and the Rules and Regulations of the Board of Registration for Professional Engineers and Professional Land Surveyors)

Reverse side of this form may be used if more space is needed.

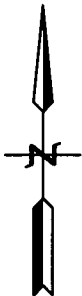
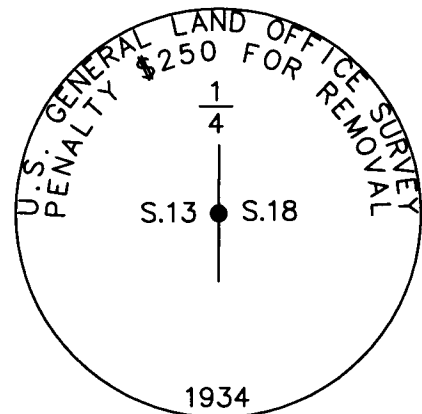
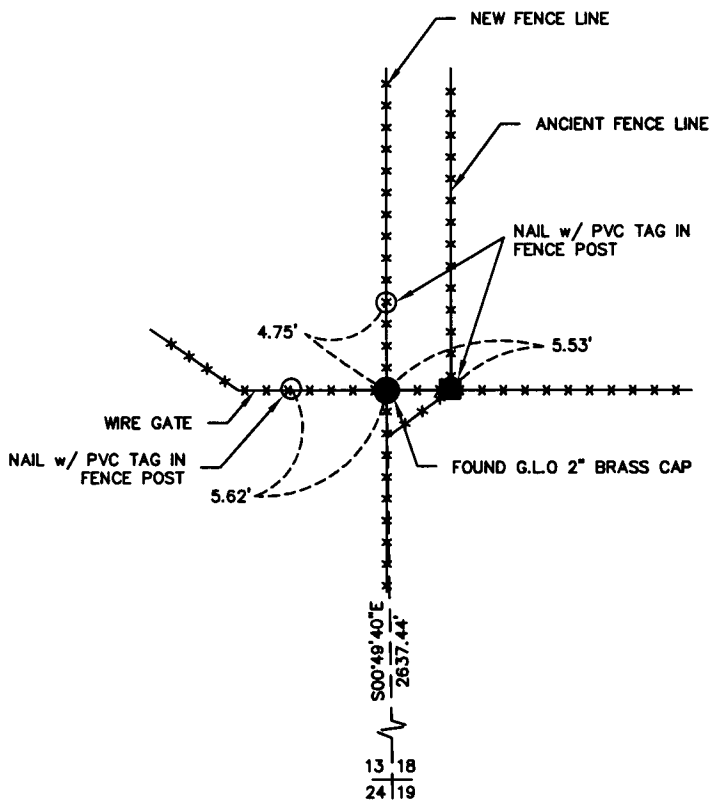
Record of original survey and citation of source of historical information (if corner is lost or obliterated). Description of corner monumentation evidence found and/or monument and accessories established to perpetuate the location of this corner. Sketch of relative location of monument, accessories, and reference points with course and distance to adjacent corner(s) (if determined in this survey). Method and rationale for reestablishment of lost or obliterated corner.

FOUND: Found G.L.O. Brass cap on iron pipe, 2" diameter in good condition, set 0.6' above ground at a 4-way fence intersection. Set a lathe & referenced as shown.

G.L.O. RECORD: Iron post 3' long, 1" diameter, 27" in the ground with original stone deposited along side, and a brass cap.

SET: Nothing

REFERENCES: Found as shown



Date of Field Work: 12-03

Office Reference: 2-2389.03

Firm/Agency, Address

James D. Voeller

A.V.I., p.c.

2035 Westland Road

Cheyenne, WY 82001

Telephone Number: (307) 637-6017

This corner record was by James D. Voeller under my direction and supervision.

SEAL & SIGNATURE

CROSS INDEX DIAGRAM

1	2	3	4	5	6	7	8	9	10	11	12	13	14	15	16	17	18	19	20	21	22	23	24	25	
A																									
B																									
C	6		5		4		3		2		1														
D																									
E																									
F																									
G	7		8		9		10		11		12														
H																									
J																									
K																									
L	18		17		16		15		14		13														
M																									
N																									
O																									
P	19		20		21		22		23		24														
Q																									
R																									
S																									
T	30		29		28		27		26		25														
U																									
V																									
W																									
X	31		32		33		34		35		36														
Y																									
Z																									



Corner Name: 1/4 CORNER
SBRPEPLS/PLSW: March 1994

Section: 13|18 T14N R70W; 6th P.M. Cross-Index No.: L-25

